

# STURT PEA

December 2020

Cherry  
Christmas  
HAPPY HOLIDAYS  
and  
Happy  
New Year



SHINE OF  
**LAVERTON**  
Discover the Outback Spirit

## Emergency Numbers

After hours GP Helpline

1800 022 222

Community Health

(08) 9031 1311

Crisis Care (free call)

1800 625 800

Department of Child Protection

(08) 9088 2900

### **Doctor's Surgery**

(08) 9031 1093

### **One Tree Women's Crisis Centre**

(08) 9031 1899

## Police, Ambulance, Fire & Rescue

000 or 112 (mobile)

Health Direct

13 23 51

Hospital

(08) 9088 2600

Horizon Power

13 23 51

Police

(08) 9088 2777

Poisons Information

13 11 26

Royal Flying Doctor Service  
(emergencies only)

1800 625 800

Water Corporation

13 13 75

## Accommodation

Boomers Village

(08) 9031 1135

Desert Inn Hotel

(08) 9031 1188

Laverton Caravan Park

(08) 9031 1072

Laverton Chalet/Motel

(08) 9031 1130

Oasis Serviced Apartments

0488 613 830

## Building Services & Construction

Steve Ripps Carpentry

0400913258

## Café/Fast Food/Pub

Desert Deli

0498 215 116

Great Beyond Visitor Centre

(08) 9031 1361

Desert Inn

(08) 9031 1188

## Children's Services

Story & Rhyme Time

(08) 9031 1800

Youth Centre - Contact Shire of  
Laverton

(08) 9031 1202

## Earth Works

C&A Taylor Grading

0427 819 564

Desert Sands Cartage Contractors

(08) 9031 1326

## Education

Cosmo Newberry School

(08) 9037 5943

Laverton Kindergarten

(08) 9031 1020

Laverton School

(08) 9031 1020

Mt Margaret School

(08) 9037 5959

Mulga Queen School

(08) 9031 3300

## Electrical and Refrigeration

AS Refrigeration

(08) 9031 1221

Powerchill

(08) 9031 1172

PWT Electricians

0438 444 962

Auto Electrical Repairs & Air  
Conditioning

0408 092 332

Multiple Trades & Maintenance

9378 3395

## Funeral Directors

Leonora Funerals

0408 951 186

## Freight

Laverton Freight Yard

0488 717 628

## Justices of the Peace

Mrs Shaneane Marjorie Weldon

0458745391

Mr Robert Martin Wedge

0417 951 153

## Public Transport

Gold Rush Tours

1800 620 440

## Mining/Exploration

Goldfields Australia-Granny Smith  
Mine

(08) 9088 2105

Sunrise Dam Gold Mine

(08) 9080 3765

Murrin Murrin Mine Site

(08) 9212 8400

Windarra Mine Site

(08) 9031 1611

Lynas Corporation Mt Weld

(08) 9031 1645

Gruyere Project, Yamarna

(08) 9037-5963

Dacian Gold, Mt Morgans Gold Operation  
(08) 6323 9100

## Pest Control

Mobile Pest and Weed Control  
(08) 9093 2809

## Post Office

Laverton Post Office  
(08) 9031 1101

## Recreation Clubs

Laverton Gym—Contact Shire of Laverton  
(08) 9031 1202

Laverton Race Club  
0417 951 153

Laverton Sports Club Inc.  
(08) 9031 1220

Laverton Sporting Shooters Association  
0418 935 518

## Religion

The Church of The Resurrection -  
**Fr Robert O'Bryan**  
0457980852

LA Outback Church  
0497 642 260

## Service Station/Mechanic

Laverton Motors  
(08) 9031 1210

Laverton Auto Electrics -Mechanical  
Repairs and Tyre Services-fully licensed  
repairer.  
0408 092 332

## Shire of Laverton

Reception  
(08) 9031 1202

Great Beyond Visitor Centre  
(08) 9031 1361

Laverton Community Resource Centre/  
Library  
(08) 9031 1800

## Shire Councillors

President Cr. Patrick Hill  
0419 925 371

Deputy President Cr. Shaneane  
Weldon  
0458 745 391

Cr. Gary Buckmaster  
0427 476 474

Cr. Jack Carmody  
0488 581 729

Cr. Robin Prentice  
0409 311 442

Cr. Rex Ryles  
0418 935 518

Cr. Rex Weldon  
0427 348 516

## Shopping

Laverton Supermarket  
(08) 9031 1675

## Tourist/Recreation

Laverton Outback Gallery  
(08) 9031 1395

Great Beyond Visitor Centre  
(08) 9031 1361

## Pastoral Properties

Banjawarn Station  
(08) 9037 5977

Bandya Station  
(08) 9031 3727

Delita Station  
(08) 9037 5954

Erlistoun Station  
(08) 9031 3954

Lake Wells Station  
(08) 9037 5962

Laverton Downs Station  
(08) 9037 5998

Minara Station  
(08) 9037 5966

Mt Weld Station  
0438 188 769

Prenti Downs Station  
(08) 9981 2111

0488 581 729

White Cliffs Station  
(08) 9037 5950

Wonganoo Station  
(08) 9037 5942

Yamarna Station  
(08) 9037 5963

## Local Politicians

Kyle McGinn MLC— Member for  
mining and pastoral

*Electorate Office (08) 9022 7003*

**Kyran O'Donnell MLA**—Member for  
Kalgoorlie  
(08) 9021 6766

Hon Robin Scott MLC—Member for  
mining & Pastoral region  
(08) 9093 1455

If you wish to add  
your number to this  
list, or you do not  
wish to be listed,  
please contact the  
Laverton  
Community Resource  
Centre.

(08) 9031 1800

Laverton@ crc.net.au





## Shire News

The Shire of Laverthon would like to raise the following items that may be of interest to community members. For further information, please visit the Shire website at [www.laverthon.wa.gov.au](http://www.laverthon.wa.gov.au) or contact the CEO during office hours if the information you seek is not on the website.

### **2020-2021 Holiday Season**

As we are now coming into the 2020-2021 holiday season, on behalf of the Shire Council and Staff I would like to take this opportunity to wish all of our community members and their extended families the very best for Christmas and New Year. We hope you have a safe and happy December and January and enjoy your break if you are having one.

### **Christmas Closure**

Shire of Laverthon Administration Office will be closing for Christmas from 22 December 2020 at 4.30pm to 5 January 2021 8.30am.

### **Annual Electors Meeting**

The Council would like to inform and invite interested community members to the Annual Electors Meeting to receive the annual report for the year ending 30 June 2019 on Thursday 10 December 2020 at 4pm. The agenda including the annual report will be available prior to the meeting either on the Council's website or at the Shire Administration Office.

### **Ordinary Meeting of Council Dates for 2021**

|                       |                     |                        |
|-----------------------|---------------------|------------------------|
| No January Meeting    | Thu. 27 May 2021    | Thu. 23 September 2021 |
| Thu. 25 February 2021 | Thu. 24 June 2021   | Thu. 28 October 2021   |
| Thu. 25 March 2021    | Thu. 22 July 2021   | Thu. 25 November 2021  |
| Thu. 22 April 2021    | Thu. 26 August 2021 | Thu. 16 December 2021  |

### **Next Ordinary Meeting of Council**

The next Ordinary Meeting of Council will be held on Thursday 10 December 2020 at 5:00pm in the Council Chambers of the Shire Administration Building. These meetings are open to all members of the public who wish to attend. Residents are reminded that they can view the forthcoming Agenda and past Minutes of meetings on the Shire website.

### **Council Works and Services**

Town Works Crew have been kept very busy with their daily activities, general routine maintenance, street pick up – debris and litter, mowing, airport routine inspections and reporting, repairing damage caused by vandalism.

#### **Vandalism**

- Repairing broken reticulation
- Removing graffiti
- Laver Place sprinklers and bollard repairs
- Shire Administration Office repairs
- Various windows & crimsafe fittings

### **Old Coach House**

Work on the Coach House building is progressing well and is planned to be in use during January 2021.

### **Laverton Town Rules**

The Laverton Stakeholder Group have been working on the Laverton Town Rules for visitors coming in from NG Lands. We have inserted a copy of the rules in this months Sturt Pea also.

In closing, and again on behalf of Councillors & Staff, we wish you a Merry Christmas and a prosperous New Year.

**Peter Naylor**  
**Chief Executive Officer**

## SKIPPERS AIRFARES

### **SKIPP-E-FLEX – Y class \$484 inclusive of head taxes and GST**

1. Fare is a "FLEXIBLE FARE".
2. Payment and ticketing is required at time of booking.
3. Itinerary changes are permitted up to 24 hours prior to scheduled departure time and are subject to availability.
4. Fare is NON refundable.
5. No destination changes permitted.
6. Credit vouchers can be requested up to 24 hours prior to scheduled flight time.
7. Name changes are permitted up to 2 hours prior to flight departure time
8. Fare is forfeited if the passenger fails to complete check in before the flight closure time. All flights close 30 minutes prior to the scheduled departure time.

### **SKIPP-E-SEMI FLEX – B class (Corporate fare) \$400 inclusive of head taxes and GST**

1. Fare is a "SEMI FLEXIBLE FARE".
2. Payment and ticketing is required at time of booking.
3. Itinerary changes are permitted up to 24 hours prior to scheduled departure time and are subject to class availability.
4. Fare is NON refundable.
5. No destination changes permitted.
6. Fare is upgradable to flexible fare with change fee of \$44 plus difference between fares.
7. Name changes are permitted with a \$44 change fee per person, per change.
8. Fare is forfeited if the passenger fails to complete check in before the flight closure time. All flights close 30 minutes prior to the scheduled departure time.

### **SKIPP-E-DEAL – S class (Community and standby fare) \$253 inclusive of head taxes and GST**

1. Fare is a "DEAL FARE".
1. Payment and ticketing required at time of booking.
2. Fares NON refundable.
3. No destination changes permitted
4. Name changes are not permitted.
5. No itinerary changes permitted
6. Standby fare only 24 hours prior to flight departure time subject to seat availability.
7. Community fare available to local residents no less than 60 days prior to flight departure time subject to seat availability.
7. Fare is forfeited if the passenger fails to complete check in before the flight closure time. All flights close 30 minutes prior to the scheduled departure time.



## Laverton Community Town Rules

**L**et's keep Laverton clean and tidy, please put your rubbish in the bin

**A**dults are responsible for making sure children attend school, and are home before dark

**V**iolent and anti-social behaviour is never ok, keep Laverton safe for all

**E**veryone must only drink alcohol in non-restricted homes or licensed premises

**R**espect for culture, our town and for all community members

**T**ogether we are responsible for the health and safety of our community

**O**nly camp in designated camping areas. Look out for the 'No Camping' signs

**N**obody likes to be kept up all night, please keep the noise down



### Key Contacts

#### Shire of Laverton

9 MacPherson Place, Laverton WA 6440

Tel: (08) 9031 1202

#### Laverton Police

29 Augusta St, Laverton WA 6440

Tel: (08) 9088 2777

#### Laverton School

Lancefield St, Laverton WA 6440

Tel: (08) 9031 1020

#### Department of Communities

Tel: (08) 9022 0700

#### Pakaanu Aboriginal Corporation

Tel: 0473 848 968



## Laverton Community Resource Centre News- December 2020

**May this Christmas end the present year on a cheerful note and  
make way for a fresh and bright new year-  
Merry Christmas & Happy New Year**

Hello Readers, welcome to the December and to the final edition of the Sturt Pea Magazine for 2020.

December is a busy month for the Laverton CRC Team with lots of end of year events. The CRC team are busy making final preparations for the following;

- Community Christmas Lights Competition- to be held on Friday 4 December commencing from 6:30pm in Augusta Street.
- Better Beginnings Story and Rhyme Time Break-up will be held on Wednesday 9 December, 10:00am at the CRC.
- The Seniors Morning Tea Break-up will be held on Thursday 10 December, 10:00am at the CRC.

The CRC will be closing for our Christmas Break 9:00am on Wednesday 23 December and will re-open 9:00am on Tuesday 5 January 2021.

A reminder that the next Sturt Pea will be printed in February 2021.

The Laverton CRC Team would like to thank everyone who supported our CRC throughout 2020, we wish you all a Merry Christmas and Happy new Year.



Enjoy the read,  
Johanna McGuire  
Manager Community Resource Centre



### Advertising Rates

|                         |         |
|-------------------------|---------|
| Full Page Black & White | \$25.00 |
| Full Page Colour        | \$40.00 |
| Half Page Black & White | \$13.00 |
| Half page Colour        | \$22.00 |
| Classifieds             | Free    |

If you would like a copy of the Sturt Pea magazine emailed through to you each month, please email request through to [crcassist@laverton.wa.gov.au](mailto:crcassist@laverton.wa.gov.au).  
Alternatively the monthly magazine can be viewed online through the Shire of Laverton website, [www.laverton.wa.gov.au](http://www.laverton.wa.gov.au).

### Disclaimer

The information in this publication is of a general nature and is provided as a service to the community. No responsibility is accepted for the accuracy of this information. The Editor of the Sturt Pea reserves the right to reject or not publish any material which may be scandalous or offensive to any person. No liability will be accepted by the Editor for any statements of opinion, error or omission.  
Please email your submissions to [crcassist@laverton.wa.gov.au](mailto:crcassist@laverton.wa.gov.au).

### Contact :

Shop 4, Laver Place,  
Laverton, WA, 6440  
[laverton@crc.net.au](mailto:laverton@crc.net.au)  
(08) 9031 1800





## Laverton Community Resource Christmas Closure Dates



|                       |         |
|-----------------------|---------|
| Wednesday 23 December | -Closed |
| Thursday 24 December  | -Closed |
| Friday 25 December    | -Closed |
| Monday 28 December    | -Closed |
| Tuesday 29 December   | -Closed |
| Wednesday 30 December | -Closed |
| Thursday 31 December  | -Closed |
| Friday 1 January 2021 | -Closed |
| Monday 4 January 2021 | -Closed |

Wishing all our Readers a Merry & Safe  
Christmas & New Year

Thankyou for supporting this monthly  
publication, the next edition will be printed on  
Monday 1 February 2021.



Regards, Laverton CRC Team







# SENIORS CHRISTMAS BREAK-UP!

**WHERE: LAVERTON CRC**

**WHEN: THURSDAY 10 DECEMBER 10:00AM**

**WHO: ALL SENIORS**

**COME ALONG AND JOIN US AT OUR LAST  
SENIORS MORNING TEA FOR 2020!**





Better beginnings  
Story & Rhyme time



# STORY & RHYME TIME CHRISTMAS BREAK-UP

**Where:** Laverton Community Resource Centre

**When:** Wednesday 9 December, 10:00am

**Who:** Children aged 0-5 years, Parents/Guardians

**This will be our last Story Time for 2020!**

**CHRISTMAS  
MORNING TEA!**



**SANTA VISIT!**

**CHRISTMAS PASS  
THE PARCEL**







# Community Christmas Lights Competition

Friday 4 December

Community BBQ at Augusta  
Street from 6:30pm

Community Light display tour  
from 7:30pm

Community Bus is available

Santa Visit at 7:00pm!

Rumour is...

# SANTA IS COMING TO LAVERTON!

Friday 4 December, 7:00pm





# BOOK WEEK 2020

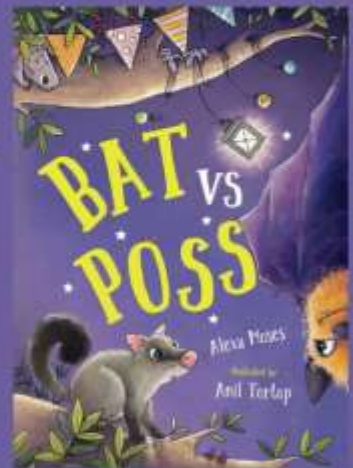
On Wednesday 28 October the Laverton Community Resource Centre held their annual Book Week event for 2020.

The morning was filled with dancing, rhymes, singing, music and some crazy monster headbands to compliment the 2020 Book Week theme 'Curious Creatures, Wild Minds!'

The 2020 shortlisted book 'Bat VS Poss' was chosen to read and the children enjoyed interacting with the Possum and Bat puppets.

Friendly Monster craft followed the stories than all enjoyed a healthy Morning Tea.

Thank you to all our attendees, parents and caregivers for celebrating with us this year, we hope you had just as much fun as we did!





The staff of the Great  
Beyond would like to  
wish you a

# MERRY CHRISTMAS

May the holidays bring you  
plenty of love and joy.

Our opening hours for  
the Christmas/New Year  
break are as follows

**MONDAY 21/12 - WEDNESDAY 23/12 - 9AM-1PM**

**THURSDAY 24/12 - CLOSED**

**FRIDAY 25/12 - CLOSED**

**SATURDAY 26/12 - CLOSED**

**SUNDAY 27/12 - CLOSED**

**MONDAY 28/12 - SUNDAY 3/1 - 9AM-1PM**

**MONDAY 04/01 - NORMAL OPENING HOURS RESUME**







## The Great Beyond Visitor Centre

Reserve their right to refuse service to any person not willing to complete the Mandatory Contact

Register by either manually entering their details or scanning the QR Code using their personal mobile device.

Requirements to maintain a contact register for certain businesses commence from this Saturday,

December 5. The State Government has released a SafeWA QR code system and app which

businesses can use as one method of maintaining a contact register.

Tourism Council WA supports the State Governments SafeWA app and contact registers to support contact tracing as WA continues to reopen and recover its tourism economy.

### Mandatory Requirements

- Certain businesses will be required to maintain a contact register for all customers (over the age of sixteen) including the customer's name, telephone number, date and arrival time.

**From 5 December 2020, the following businesses will be required to maintain contact registers for the purposes of WA Health Department COVID-19 contact tracing, should it be required:**

- Food and licensed venues (restaurants, cafés, bars, pubs, taverns, nightclubs)
- Gyms, indoor sporting centres and pools
- Places of worship and funeral parlours
- Beauty and personal care services including hairdressers and barbers
- Galleries and museums
- Cinemas, theatres and other entertainment venues
- Auction houses and real estate inspections
- Community facilities, libraries and halls
- Zoos and amusement parks
- Function centres
- Accommodation facilities that already have check-in arrangements in place (i.e. hostels, hotels, large camp grounds).
- Businesses will be required to hold the contact register for 28 days from date of customer entry (this is not needed if using the WA Safe app).
- The responsibility is mainly on the business to maintain the register, however there are some legal responsibilities on customers.

**We thank all our customers for their understanding and helping keep our staff and town safe for all.**



Merry Christmas from the hill family







## Goldrush tours

### GOLDRUSH TOURS

*Christmas/ New Year Timetable*



The Goldfields Express Bus will be running on the following times:

**KALGOORLIE - LAVERTON** **Tuesday** 22nd December  
Departing Kalgoorlie 10.15am

**LAVERTON - KALGOORLIE** **Wednesday** 23rd December  
Departing Laverton 10.00am

**KALGOORLIE - LAVERTON** **Tuesday** 29th December  
Departing Kalgoorlie 10.15am

**LAVERTON - KALGOORLIE** **Wednesday** 30th December  
Departing Laverton 10.00am

Please note: The Kalgoorlie Prospector Train, will be departing the following day  
(Thursday the 24th & 31st December) at 7:05am



For more information, contact  
The Great Beyond Visitor Centre on  
9031 1361 or  
Goldrush Tours on 1800 620 440



## **Laver ton School News**

Veris Cycling Laver ton Emerging Art Prize (LEAP) to design a cycling jersey to be worn on the 2021 Perth to Laver ton ride was recently voted on; firstly, in Laver ton and then at a NAIDOC Week event in Perth. We were very impressed with the large number of community members who viewed the designs and voted at school. Jenae Evans won the Laver ton community voting and Zaiden Langborne won the Perth voting round. Joseph Walsh and Tahj Slater were runners up. From Veris, the students received a \$200 Culture Kings voucher, sunglasses, and a hat. Additionally, some of their designs will be printed onto the cyclist jerseys for the 2021 ride. This is huge exposure for our students to showcase their artistic talents. Congratulations to all students who produced outstanding designs and thank you Veris for this amazing initiative.

We had a jam-packed day of celebrations for NAIDOC Week and enjoyed a kangaroo tail stew cooked to perfection. You may have heard us on our street march shouting, 'Always was, always will be' while proudly carrying our class banners. Thanks to everyone who helped us on the day and to all our amazing and proud students. It really was a very special day.

We invite everyone in the school community to our end-of-year assembly on Thursday 10<sup>th</sup> of December to celebrate the year. Students have been working hard on their class performance and they will appreciate a big crowd to cheer them on.

Thank you to everyone in the Laver ton Community. I have been so impressed with the level of support for and commitment to Laver ton School this year. On a personal level, I have really appreciated how welcome and supported you have made me feel.

Best wishes for Christmas and the holiday period and I look forward to another great year in 2021.

Thank you  
Diana Kirkland









## Seasons Greetings From Laver ton Police Station



As we near the end of what has been a very challenging year for everyone in Laver ton, I would like to reflect on 2020 as a whole.

As we all know Covid-19 has dominated the year. It has and continues to impact our everyday lives. March brought lockdown and the “new normal”, but due to your amazing efforts we managed to get through it together. We would like to congratulate everyone on a job well done. Maintaining social distancing and having patience with the regional restrictions, meant we avoided any local transmission. Please however do not forget the pandemic is not over and we all need to keep that in the back of our minds.

Despite these challenges, we have enjoyed more than our fair share of good times, Our highlights include, NAIDOC Week celebrations, the introduction and implementation of ‘Adopt-a-cop’ at Laver ton School and continuation of the ‘Nightfields Program’. We have placed a huge emphasis on these types of community engagement events and hope to build on these in the future.



Currently we are taking part in the Laver ton Community Christmas lights competition. We invite all of you to come down check out our efforts! Be kind.

The festive season is a favourite time of year for most of us, not least Burglar’s. However, we will ensure that we keep you safe through high visibility patrols and proactive policing. You can also do your part in helping to discourage this type of offending by securing your homes and valuables if you are going away to spend time with family or friends.

We have recently stamped down on offenders of volume crime in Laver ton during the month of November. 13 Separate offenders were identified as a result of enquiries and charged with a total of 24 offences. We hope these arrests will continue to discourage this type of behaviour and ensure Laver ton remains a safe town over the holiday season.

May we recommend you watch “Home Alone” in the build up to Christmas for security advice and also notify us or a trusted neighbour if you are going to be away for an extended period of time.



WA Police Force is once again running the Christmas Double Demerits Road Traffic campaign, which commences at 0001 hours on Friday 18 December 2020 and comes to an end at 2359 hours on Sunday 3 January 2021. This means double demerits will apply to prescribed offences including

- Speeding,
- Seatbelt offences pertaining to the driver,
- Illegal use of mobile phones whilst driving,
- Drink driving offences with a BAC of 0.05 or above
- Presence of prescribed illicit drugs or fail to supply oral or blood sample
- Contravene a red traffic control signal/arrow
- Drive a motor vehicle fitted with a device designed to evade detection by a speed camera
- Drive a motor vehicle in a manner to evade detection by a speed camera

Our aim is to discourage these types of driving offences and hope you all take road safety seriously. Please to do not put yourselves and other road users at risk. We want to help ensure joy does not become tragedy this holiday season so please enjoy alcohol responsibly, have a designated sober driver and ensure you have enough time to reach your destination. We want you all remain off our naughty list.

On that note, please do not leave alcohol out for Santa, he prefers milk and needs to stay sober so he can continue onto deliver presents to everyone on the 'nice list'.

For you kids, we would like you all to know Santa and his reindeers have already been given, special exemption through our Covid-19 G2G app and he will be escorted to your homes, by our specialist covert unit upon arrival in the Goldfields.



Merry Christmas and all the best for 2021!

Laver ton Police

Author: Acting Sergeant ELLIOT



NOVEMBER 2020

CDP NEWSLETTER



wirrpanda  
foundation

## NAIDOC Week 2020 Highlights!

**NAIDOC Week 2020 'Always Was, Always Will Be'** celebrations, events and activities were held across the Goldfields Region from 8<sup>th</sup> -15<sup>th</sup> November to honour the history, culture and achievements of First Nation's People in collaboration with local Schools, Shire/Council's, Mining Companies, Stakeholder's and Service Providers. It was an absolute honour to have the Foundation support and partner with local organisations, thank you to all involved for sharing cultural knowledge and guidance along the way.

Our **Wirrpanda Cook-Up in Leonora** was relocated last minute and worked out to be a great day with staff welcoming local community children, Support Services and Stakeholders serving up delicious Kangaroo Stew, taking part in Damper Making, hosting Cultural Activities, Spear Making Workshop and Garden Play! **Thank you to all who contributed on the day to make this a huge success!**

Some wonderful performances across the Region this year included **Yabu Band** visiting communities of Laverton and Leonora along with local schools to deliver special cultural messages to children and families.

Special thank you to the **Nyunnga-Ku Women's Group** and **Shire of Leonora, Leonora NAIDOC Week Committee, Pakaanu Aboriginal Corporation** and **Laverton NAIDOC Committee Group** for allowing us to be part of co-ordination and support for this great week of events.



**Always Was,  
Always Will Be.**  
8-15 NOV 2020



wirrpanda  
foundation





## CDP Christmas Closure Update!

Our Goldfield's Region Offices will be closed over the Christmas period from the **Thursday 24<sup>th</sup> December 2020** and will reopen on the **Monday 4<sup>th</sup> January 2021**.

All CDP Activities will close on the **Friday 18<sup>th</sup> December 2020** and will recommence **Tuesday 5<sup>th</sup> January 2021**

Please direct all queries to 9242 6730.

On behalf of all Wirrpanda Staff, we wish you a Merry Christmas and a safe Happy New Year!



## CDP PROJECT UPDATE!



CDP Projects across the Region are growing with participant numbers, generating lots of interest with Projects and Activities from **Natural Food Tie-Dyeing, Creative Me Artistry, Portable BBQ (RIMQ), Tyre Pot Planters, Mechanics and Carpentry!**

**New Project Planning for 2021** is now in place with our CDP Activity Supervisors. A **survey** will also be conducted to have community feedback on how we can improve and like to see more of for the New Year.

**Thank you to all CDP Volunteers, Participants and Staff** for dedication through this challenging year. **Wishing everyone a safe and happy Christmas, looking forward to a great 2021!**



# Merry Christmas

from the **Wirrpanda Foundation**

CDP Goldfields offices will be closed over the Christmas period from **Thursday 24<sup>th</sup> December 2020** and will reopen on the **Monday 4<sup>th</sup> January 2021**

All Work for the Dole activities will close on **Friday 18<sup>th</sup> December 2020** and will recommence **Tuesday 5<sup>th</sup> January 2021**

Should you have any questions regarding this closure, or your payments please do not hesitate to contact your consultant/office.

We wish you a Merry Christmas and a safe Happy New Year!!







## Laverton Aboriginal Art Gallery

Managed by  
LAVERTON CROSS CULTURAL ASSOCIATION INC.

### Genuine Aboriginal Art

By Artists from Laverton and the Western Desert area

**Come and see the outback through the eyes of local Aboriginal artists at Laverton Gallery. Each of the original artworks is unique and tells the stories of this beautiful country.**

➤ Eftpos facilities

➤ Secure payments



The Laverton Gallery was established to display, promote and sell authentic Aboriginal art on behalf of artists from Laverton & the Western Desert.

**Email:** [admin@lcca.org.au](mailto:admin@lcca.org.au) |

**Phone:** (08) 9031 1395

Cnr of Euro & Augusta St, Laverton W.A 6440 |

P.O Box 123, Laverton W.A 6440



**LAVERTON ABORIGINAL ART GALLERY & LCCA  
WILL BE CLOSED FROM**

**WED 23RD DEC 2020 - 11TH JAN 2021**

ON BEHALF OF THE LCCA BOARD MEMBERS AND STAFF  
WE WISH YOU

*a VERY MERRY  
CHRISTMAS AND a HAPPY  
NEW YEAR*





# Catholic Diocese of Geraldton W A

[www.geraldtondiocese.org.au](http://www.geraldtondiocese.org.au)



## A Message from the Catholic Parish of Church of Resurrection, Laverton

Our next Mass will be the Celebration of the Birth of Christ (Christmas Mass) on Saturday the 19<sup>th</sup> December, commencing 6.00pm.

At our new premises in the Old Court House which borders the Town Oval, in Craiggie Street Laverton.

If you are going away for Christmas or leaving town May I take this opportunity to thank you for your friendship and support and wish you

**God's Blessings for Christmas and the New Year.** *Robert*

The Catholic Parish of Laverton is linked to the Parish of Our Lady of Mt Carmel and there may be times, due to sickness or road conditions where I may not be able to celebrate the Eucharist so I ask that you please contact me at the on the details given below.

Kindest Regards in Christ Our Saviour

(Fr.) *Robert O'Bryan*

Our Lady of Mt Carmel Parish Mullewa Linking with the parishes of St Joseph's Mingenew, St Finbar's Yalgoo, Church of the Holy Cross Morawa, St Joseph's Perenjori; Sacred Heart, Leonora; Church of the Resurrection, Laverton; St Francis of Assisi, (Christian Peace Centre), Leinster. For further details contact Fr Robert O'Bryan on 0457980852; Email: [olmcchurch@westnet.com.au](mailto:olmcchurch@westnet.com.au)

**The continuing dry spell is putting pressure on the environment.**

**This can be seen with the drying trees and Kangaroos amongst the ground dwelling animals. We started feeding and providing water to the kangaroos at the mine site about 5 months ago when some roos started eating cardboard boxes in the shed. An internet search said that cardboard is cellulose and digestible by roos but of no nutritional value. The roos are extremely enthusiastic about green kitchen waste. We found that we didn't produce much green waste and approached Shona at the Roadhouse where she emerged from the back room with a bag of cabbage leaves, carrot tops, celery and lettuce. Shona and the team have been supplying the roos with a bag a week.**

**At this time of year I would like to thank Shona and her crew for helping sustain these animals until we finally see some welcome rain which hopefully arrives before Christmas.**

**Sven and Shelly**





# MANI-KU NINTI

## MONEY TALK

Christmas is not far away and its the festive season for some, but for others it can be a really stressful time of year. The financial pressure can be huge especially when you have children that want absolutely everything, and then some.

You can make things a little easier on yourself if you are organised.

- Set a spending limit for each person
- If you have a big extended family only buy for the kids or buy one gift that the whole family can use like a board game or blow up pool.
- Shop by yourself (you don't get nagged to buy stuff)
- Make a list of what you want to buy before you go shopping and stick to it
- Don't wait till the last minute

you can buy little things when they are on sale before Xmas

- If you are having family come over for lunch, ask everyone to bring some food with them
- Pay with cash or debit card if you can. When you buy now and pay later you are going to get a bill for things that you maybe cant afford.

We would like to wish everyone a Merry Christmas from Tania and Sue



### MONEY SMART - FINANCIAL COUNSELLING SERVICE

Completely FREE and CONFIDENTIAL we can help you with

BUDGETING, DEBT MANAGEMENT, TAXATION, SUPERANNUATION, BANKING AND PROBLEM GAMBLING

We will be at the Laverton Resource Centre on Tuesday 8th through to Thursday 10th of December

NGANYATJARRA-  
COUNCIL



**St John**

## Laverton Sub Centre

### **NOTICE OF ANNUAL REVIEW**

14 December 2020

Tuesday 6pm

10 Weld Drive

**Everyone welcome!**

New Committee Members Needed.

It is up to the Community to Keep the Sub Centre Functioning!

For more information, please contact

[lavertonsubcentre@outlook.com](mailto:lavertonsubcentre@outlook.com)

**Life goes on.**

**Volunteer with St John.**

[stjohnchangelives.com.au](http://stjohnchangelives.com.au)





**St John**

# **ST JOHN AMBULANCE LAVERTON**

## **Wishes to thank...**

**BOOMERS VILLAGE**

**LAVERTON RACE CLUB**

**T.A.B**

**GOLDFIELDS GRANNY SMITH**

- Derek Watts

- Anthony King

- Justin Robin

- Emily Allen

**L.C.C.A**

**ST JOHN'S MENZIES, LEONORA**

**AND KALGOORLIE**

Thankyou for your kind donations  
and time to our Sub Centre on race  
day. It was a very successful day  
thanks to your support and assistance

# Gruyere Gold Mine

## Responsible Use of Cyanide

At Gruyere, we recognise that we have a responsibility for the safe management of all the chemicals we use in the gold mining and production process. Cyanide is used at Gruyere to extract gold from the ore. Cyanide has been safely used in mining operations around the world for over a hundred years. Gruyere is a signatory to the International Cyanide Management Code (ICMC). The Code is voluntary and has been developed to improve cyanide management practices and to assist in the protection of human health and the environment.

## Transportation of Cyanide to site

Cyanide is transported to site as a solution held in specially engineered containers (isotainers). All delivery drivers are accredited to transport dangerous goods and have been trained in cyanide management. The delivery route for the cyanide has been selected to minimise the risk to people and the environment as far as practicable. The cyanide is first transported by train from Perth to Kalgoorlie before making the final journey by road.

## What is cyanide and why do we use it?

Cyanide refers to a chemical compound that contains one carbon atom and one nitrogen atom. At Gruyere we receive it as a 30% sodium cyanide solution. The sodium cyanide solution has a strong ammonia smell as this is also present in the solution. Gold itself is a "Noble metal" which means that it does not chemically react easily, Cyanide is one of the few chemicals which is able to cause gold to dissolve into solution. Making Gold possible to extract from ore economically feasible. The following are some risk associated with cyanide: Cyanide poisoning, Ground water contamination and Flora & Fauna deaths. Potential exposure to the community may occur should the vehicle transporting cyanide to site be involved in a major road or rail accident. The cyanide is transported in 'Isotainers' which are designed to withstand damage without rupturing. Strict control as outlined in the Dangerous Goods Act are also applied to cyanide transport.

## What is the international cyanide code?

The International Cyanide Management Code (ICMC) is a voluntary Code of practice for gold mining companies. It focuses on the safe management of cyanide and cyanidation mill tailings and leach solutions. The objective of the code is to improve the management of cyanide used in gold mining and assist in the protection of human health and the reduction of environmental impact. In October 2020, Gruyere Gold Mine was certified as fully compliant to the International Cyanide Management Code.

## What is Gruyere Gold Mine doing to control the risk of cyanide to health and environment

- Gruyere Gold Mine uses Cyanide manufactured and transported to site by cyanide code certified companies.
- Continues monitoring on operating parameters, such as pH and Cyanide concentrations to minimise risk of exposure to employees.
- Personal continuous monitoring of HCN gas levels to minimise risk of exposure to employees.
- Training of employees in the safe use and handling of cyanide.
- Continued monitoring of the interaction of wildlife and regular groundwater monitoring to ensure that contamination does not occur.
- Construction of adequate bunding systems for the capture and containment of leak or failures.
- Planning for end of mine life decommissioning of process facilities and methods of fully funding this process.
- Development of emergency response plans as well as maintaining a trained emergency response team.
- Communicating with the community on Gruyere Gold Mines use of Cyanide and addressing concerns raised.

## How gold is produced at Gruyere Gold Mine Processing Plant?

### Comminution circuit

- In this circuit the ore from gruyere pit is reduced in size from large rocks (>1 Meter) to fine size (around 1/10 of Millimetre) slurry.
- Gruyere gold mine use multiple Crushers and Mills like Gyratory crusher, Pebble crushers, SAG mill and ball mill to achieve the target grind size.





## Comminution circuit continued..

- Comminution circuit liberates the fine gold particles to expose them for digestion downstream in the leaching circuit.
- Recycled process Water, Lime and ore are fed into the SAG mill to achieve slurry with high pH to reduce the HCN emission.

## Leaching and Adsorption circuit

- In this circuit the finely ground ore product from the comminution circuit is pumped to the leach tank where cyanide and oxygen is added to dissolve the available gold particles.
- The pH and cyanide concentration of the leach tank is continuously measured and controlled to ensure that process objectives are met while minimising the production of Hydrogen Cyanide (HCN) gas.
- Slurry from the leach tank flows into the adsorption (CIL) tanks which contain granules of activated carbon. The activated carbon gives a surface for the gold-cyanide complex to attach to making it possible to concentrate the dissolved gold in solution and recover it.

## Gravity circuit

- This circuit separates the coarse gold concentrate from waste by exploiting their difference in density by using Knelson separators.
- Once the gold concentrate is separated, they are leached in In Line leach reactor with high Cyanide and high pH solution.
- This circuit is parallel circuit to leaching and adsorption circuit. The feed for circuit is coming from comminution circuit.

## Refinery circuit

- Gold bearing carbon is recovered from the CIL tanks once per day and treated with good quality water and cyanide at high temperatures and pressures to recover the gold from the carbon and concentrate into a clean, high grade gold solution.
- This high-grade solution is passed through electrowinning cells that use electricity to plate the gold out on steel cathode; the same process is carried out separately for the high-grade solution from the gravity circuit ILR.
- The cathodes are then cleaned intermittently, and the plated gold collected, filter pressed, dried and then smelted in a furnace and poured as gold bars. These bars are between 80-95% pure gold.

## Tailings Disposal

- Once the gold has been recovered from the ore, the slurry is thickened again to recover more water and then pumped and stored within our Tailing Storage Facility (TSF).
- Water is recovered again via a central decant tower on TSF that pumps back to the plant.
- The TSF is regularly monitored to ensure that seepage from the facility does not contaminate the ground water.



**If you have any questions or concerns regarding the use of cyanide at our operation, please contact us via email at [Community@gruyerejv.com](mailto:Community@gruyerejv.com).**



safety



integrity



respect



responsibility



innovation



delivery



**GOLD FIELDS**

GRUYERE MANAGEMENT



# SHOWER HEAD SWAP

DID YOU KNOW?  
YOU CAN SAVE UP TO  
20,000L A YEAR USING A  
WATERWISE  
SHOWERHEAD



## BE WATERWISE!

VISIT THE LAVERTON COMMUNITY RESOURCE  
CENTRE WITH YOUR OLD SHOWER HEAD TO SWAP  
IT FOR A BRAND NEW WATERWISE SHOWER HEAD  
FOR FREE!

FOR MORE INFORMATION GO TO:

<https://www.watercorporation.com.au/Waterwise>





## **Quit for new life**

Planning to have a baby or discovering you're pregnant can be one of the best moments in your life. This is the time to change to a healthier lifestyle for you and your family. Having a balanced diet, taking the right medication and participating in physical activity are some ways to get healthy. But the most important change you can make for yourself and your family is monitoring your use of tobacco smoking and exposure to second-hand smoke.

According to the Australian Institute of Health and Welfare (AIHW), around 12% of women smoked at some time during their pregnancy. The smoking rates were higher among younger mothers (34%) and Aboriginal women (47%).

Smoking during pregnancy is harmful to the health of both the mother and the unborn child. Cigarette smoke contains more than 7000 chemicals, including lead, nicotine, cyanide, cadmium, mercury, carbon monoxide and tar. Around 70 of these chemicals are known to cause cancer. These chemicals travel to the unborn baby through absorption into the mother's blood and disturbs the supply of essential nutrients to both the mother and baby, increasing the risk of potential health problems. Carbon monoxide reduces oxygen supply leading to poor development of baby. In fact, smoking during pregnancy can lead to just some of these problems:

- Lower birth weight (underdeveloped organs including lungs, heart and brain);
- Premature birth (being born too early);
- Miscarriage;
- Stillbirth (baby is not alive when born);
- Increased risk of SIDS (sudden infant death syndrome); and
- Babies are at higher risk of getting asthma, high blood pressure and diabetes.

These complications can also develop if pregnant women and newborn babies are exposed to passive (second-hand) smoking. Smoking after pregnancy can also harm a baby as these chemicals easily transfer through breast milk.

Stopping smoking is the best thing you can do for yourself and your baby. It is financially rewarding and socially acceptable too. It can be difficult for some people to quit, and especially hard while pregnant, but having strong motivation and determination will benefit you, your baby and your entire family.

Some practical steps to take if you are regularly exposed to smokers and to protect your family from passive smoking include:

- Wherever possible, move away from people who are smoking, or stay in non-smoking areas;
- Make your home and car smoke-free; and
- Put up 'No Smoking' signs around the house.

Talk to your doctor, midwife or health practitioner for more information and support. Call Quitline on 13 78 48 for a free professional and confidential counselling service. You can also use "Quit for you, Quit for two" smartphone app for further support and encouragement. Contact Bega Tobacco Action Team on 9022 5500 for information and support on quitting smoking.

Sachin Khera

Regional Tobacco Coordinator

Bega Garnbirringu Health Services

Email: [NoSmokes@bega.org.au](mailto:NoSmokes@bega.org.au)

Phone: 9022 5500

Web: [www.bega.org.au](http://www.bega.org.au)

[Join us on Facebook @BegaTIS](#)



**PUYU WANTIKATINHI**  
LEAVE THE SMOKES ALONE

## Quit for Your Baby



The best thing you can do  
for your baby is to **QUIT SMOKING!**

If you smoke while pregnant, the chemicals from  
the cigarettes can harm you and your unborn baby.



Bega  
Garnbirringu  
HEALTH SERVICE



**THINKING ABOUT QUITTING?**

Talk to the team at Bega  
or call Quitline 13 78 48.



## Babies shouldn't smoke!

Each time a breast feeding mum has a cigarette, the smoke is trapped in her hair, clothes and skin.



- Smoke **AFTER** breast feeding.
- Keep baby in a **SMOKE-FREE** room.
- **COVER** your clothes while smoking.
- **WASH** your hands and face afterwards.



Bega  
**Garnbirringu**  
HEALTH SERVICE



**PUYU WANTIKATINHI**  
LEAVE THE SMOKE ALONE

**THINKING ABOUT QUITTING?**

Talk to the team at Bega  
or call Quitline 13 78 48.



# COVID-19 Contact register

## Do your part in keeping WA safe

To help keep WA safe, it will be mandatory for some businesses and venues to record your contact details each time you visit.



## Download SafeWA and check-in

SafeWA is the WA Government's check-in app that provides a secure and convenient way for you to register your attendance at businesses and venues.



- Contact details are safe and secure
- Easy to set-up
- Quick on the go
- Free

Download the app







# COVID-19 Contact register

## SafeWA guide for individuals

SafeWA is the WA Government's free and convenient app to safely and securely register your attendance at various businesses and venues.



Using the SafeWA app is easy

- 1 Download
- 2 Create an account
- 3 Check in




- 1 Download



GET IT ON  
Google Play

Available on the  
App Store

- 2 Create an account

- Tap on the individual icon 
- Enter your information
- Create a password
- Enter the security PIN sent via SMS to verify your account

- 3 Check in

- Open the SafeWA app
- Scan the venue or business's QR code to check in

You can also add others who are with you and do not have the app.



If you require support call 13COVID (13 26843)





# COVID-19 Contact register

## SafeWA guide for businesses

SafeWA is the WA Government's free and convenient app for businesses to safely and securely record patrons' contact details.



Using the SafeWA app is easy

- 1 Download
- 2 Create an account
- 3 Set up your business venue
- 4 Print out your posters



### 1 Download



### 2 Create an account

- Tap on the business icon
- Enter your information
- Create a password
- Enter the security PIN sent via SMS to verify your account
- Add your business name and type of business



### 3 Set up your business venue

- Add your business address
- Set up your venue

If required, you can set up other business venues or multiple locations per venue.

### 4 Print out your posters

- A SafeWA pack with your QR code posters will be emailed to you
- Print these out and put them up in your business



If you require support call 13COVID (13 26843)





# COVID-19 Contact register

As of 5 December 2020, it will be mandatory for some businesses and venues to record contact details of customers and patrons. Keeping a contact register will help WA Health with contact tracing.

## Contact register options



- Free digital contact register tool
- Safe, secure and convenient for you and your customers
- Collects the correct contact details for you
- Quick and simple to set up

Download the app



### Pen and paper



Paper based contact registers are also available. However, it is your responsibility to keep these details safe and to provide it when needed.

Find out more about  
contact register  
requirements

**WA.gov.au**

# Merry Christmas

*We Would like to take this opportunity  
to thank you for your support, your loyalty  
and faith in our office throughout the year.*

*Wishing you and your family a Merry  
Christmas and Safe and Happy New Year.*

*From your Honourable Member Robin Scott MLC and Electorate Staff,  
David, Kerrie and Chloe.*





ADVERTISEMENT

# KYRAN O'DONNELL MLA

Member for Kalgoorlie



Serving the  
Goldfields Community



9021 6766



Kyran.ODonnell@mp.wa.gov.au



KyranODonnell.com.au



KyranForKalgoorlie



PO Box 10406, Kalgoorlie WA 6430

Authorised by S. Calabrese, 2/12 Parliament Place, West Perth WA 6005.

Ali Kent-Labor



**Ali Kent**  
LABOR FOR KALGOORLIE

*Your strong local voice on the McGowan Labor Team!*

Authorised by T. Picton, Unit 3, Level 1, 22 Eastbrook Terrace, East Perth WA 6004.

# Rowena OLSEN

## KALGOORLIE



# THE NATIONALS

*for Regional WA*

[rowena.olsen@nationalswa.com](mailto:rowena.olsen@nationalswa.com)

 [Instagram.com/Rowena4Kalgoorlie](https://www.instagram.com/Rowena4Kalgoorlie)

 [facebook.com/Rowena4Kalgoorlie](https://www.facebook.com/Rowena4Kalgoorlie) [nationalswa.com](https://www.nationalswa.com)

Ph: 0490 031 161

Authorised by T Fleeton, 92 Lyall St Kalgoorlie WA 6430.





## Fact Sheet



### Hot Cars

On a typical Australian summer day, the temperature inside a parked car can be over 30° higher than the outside temperature. Unfortunately there is little that can be done to prevent the temperature from rising in a parked car. Even having the car window open makes minimal difference to the internal cabin temperature. For example having the window open by 2.5cm would only reduce the temperature by approximately 3°C<sup>1</sup>.



As a parked car can get very hot quickly, it is important that you never leave children unattended in a car.

#### Dangers of Leaving Children in Cars

Leaving children unattended in the car, even for a short time, can be fatal. Here are some of the risks involved:

- Children do not tolerate heat as well as adults, and tend to feel the effects of heat much more rapidly.
- In a parked car the temperature and humidity rises, while the airflow decreases. This could lead to dehydration and other health risks.
- A child may also become distressed and try to get out of their restraint; this may also increase the risk of strangulation from the harness.

#### The Law

Under the Children and Community Services Act 2004, *Part 4 - Protection and care of children*. A person who has the care or control of a child and who leaves the child in a motor vehicle (as defined in the Road Traffic Act 1974) without proper supervision for such period or in such circumstances that:

- a) the child becomes or is likely to become emotionally distressed; or
- b) the child's health becomes or is likely to become permanently or temporarily impaired;

is guilty of a crime, and is liable to imprisonment for 5 years.

#### Reducing the Risks

- Never leave children unattended in a car.
- Plan to complete quick jobs when you don't have children with you.
- Seek service stations offering pay at the pump.
- Provide plenty of cool fluids – preferably water.
- Dress children accordingly, and check that the harness still fits the child correctly. Children wearing lightweight clothing may need their harness tightened.
- Use a visor or sunshade on car windows. Avoid using a hood on rearward facing restraints as this will decrease airflow around baby's head.
- Plan journeys for the cooler hours of the day.
- Seek shady areas to stop or park your car, to reduce the amount of the direct sunlight hitting your car.
- Ensure cars are locked and the keys are out of reach of children to prevent children gaining access to the car.
- Always check the car before you leave it.
- Cool your car down as much as possible before putting the child in the car.

For more information visit [theunconventionaloven.com.au/](http://theunconventionaloven.com.au/).

#### References:

Dadour I.R., Almanjahie I., Fowkes N.D., Keady G., Vijayan K. Temperature variations in a parked vehicle. *FORENSIC SCI INT* [Internet]. 2011 [cited 2016 February 23]; 207 (1-3):pp. 205-211. Available from: <http://dx.doi.org/10.1016/j.forsciint.2010.10.009>

#### Kidsafe WA © 2019

Excerpts may be copied for educational purposes. Written permission is required to copy this fact sheet in its entirety.

For more information

(08) 6244 4880





# DESERT SANDS

## CARTAGE CONTRACTORS

Est. 1989

- Premix • Blue Metal
- Screened Sands
- Portable Water Supply Cartage

- Bulk Tipper Haulage
- Screened River Rock
- Loader Hire • Float Hire
- Bulk Fuel Haulage
- Concrete Supplies to Remote Areas
- Heavy Duty Mechanical Repairs & Field Service
- Distributors of Fresh Drinking Water



**LAVERTON**  
**WESTERN AUSTRALIA**  
**Ph: (08) 9031 1326**



**site@desertsands89.com.au**  
**www.desertsandscartage.com.au**





Desert Sands Cartage Contractors Laverton WA  
EST.1989



**\*\*New Season\*\*** Oaten Hay Bales for Sale \$140.00 each +gst  
Please call or email before pick up at Lot 501 Cox Street Laverton WA  
Email [site@desertsands89.com.au](mailto:site@desertsands89.com.au) or Phone 08 9031 1326

Laverton Sports club



LAVERTON SPORTS CLUB COMMITTEE  
WISH ALL OUR MEMBERS A

*Merry  
Christmas & Happy  
New Year!*

Thankyou for your continued support we look forward to  
welcoming all our Members back in 2021





## Remote Work Is Our Specialty

LOCATED IN LAVERTON

We can provide:

- ✓ Mobile concrete batching plants
- ✓ Concrete supply
- ✓ Concrete installation
- ✓ Earthworks
- ✓ Demolition works

Phone Thommo on 0458-316-089 for all your concreting requirements



Phone: Thommo 0458 316 089

Phone: Office 044 884 1109

Email: [office@thommocorp.com.au](mailto:office@thommocorp.com.au)



**PLUMBING & GAS | AIR CONDITIONING | VACUUM TRUCK**



**0487 207 510**

**24/7 Emergency Service**

**DOMESTIC | COMMERCIAL | MINING**

PL9425 AU50818 T01168

**KAMBALDA | KALGOORLIE | COOLGARDIE | LEONORA | LAVERTON**

## Split Systems

Annual servicing is important for the operation of your air conditioner and the quality of the air you are breathing.



Your aircon will work better, smell better, and cost less to run



**0487 207 510**

[www.TAPSIndustries.com.au](http://www.TAPSIndustries.com.au)    [admin@tapsindustries.com.au](mailto:admin@tapsindustries.com.au)



# Have you thought of joining the....

## LAVERTON MEN'S SHED

Looking for something to fill in  
your Sunday?

Why not head down to the  
Laverton Men's Shed.

Start a new project or finish an old  
one or simply just have a cuppa and  
a chat.

**Open Sunday's from 9.00am.**

If you would like to join the Laverton Men's Shed,  
membership forms are available from the Great  
Beyond Visitor Centre or you can drop past the Shed  
on a Sunday morning and join up. A small  
membership fee applies.

[lavertonmensshed@gmail.com](mailto:lavertonmensshed@gmail.com)





Government of Western Australia  
WA Country Health Service

# Commonwealth Home Support Program (CHSP) in Laverton

**CHSP provides support services to older people to help them to continue to live independently in their own homes and in the community**

Services include: meal delivery or preparation assistance, help with showering or personal care, house cleaning, laundry, local transport, shopping, activity days, home maintenance and social support.

## Get in touch

The WA Country Health Service provides CHSP services in your area and will help you with your My Aged Care application.

For more information please phone:  
Laverton CHSP Office on 9088 2600  
To find out more you can also visit the  
My Aged Care website  
<https://www.myagedcare.gov.au/> and  
click on the 'Find and set up services'  
button.

To provide feedback on this publication email  
[wachcomms@health.wa.gov.au](mailto:wachcomms@health.wa.gov.au). Alternative formats can  
be provided on request. © WA Country Health Service.







## Darts Wrap-Up!

Laverton Sports Club held the 2020 Darts Break-up and Awards night on Saturday 21 November. The participants enjoyed a meal together and a few beverages.

The following awards were presented;

- Most Pegs Male - Chris Hedlam
- Most Pegs Female - Laurinda Hill
- Highest Average Male- Chris Hedlam
- Highest Average Female - Jayne Cross
- Highest Score Male- Chris Hedlam & Paul Ovans
- Highest Score Female- Julie Ovans
- Most Centuries- Stuart Ugle
- 180 Score- Carolyn Hedlam



Congratulations to all the winners and thankyou to all the participants who supported Darts throughout 2020, looking forward to an even better season in 2021.







# CHRISTMAS JOKES



1. WHY DOES SNOOP DOG LOVE GIVING GIFTS?
2. WHAT DID ADAM SAY TO EVE THE DAY BEFORE CHRISTMAS?
3. WHAT DO YOU CALL PEOPLE WHO ARE AFRAID OF SANTA CLAUSE?
4. WHAT DO FISH SING AT CHRISTMAS?
5. WHAT DO SANTA'S LITTLE HELPERS LEARN AT SCHOOL?
6. WHAT IS RED, WHITE AND BLUE?
7. WHO'S RUDOLPH'S FAVOURITE SINGER?
8. HOW DO SNOWMEN GET AROUND?
9. WHAT DO YOU CALL A BROKE SANTA CLAUSE?
10. WHAT'S THE DIFFERENCE BETWEEN THE CHRISTMAS ALPHABET

1. HE'S REALLY GOOD AT WRAPPING 2. IT'S CHRISTMAS, EVE 3. CLAUSTROPHOBIC 4. CHRISTMAS (CORALS)  
5. THE ELF- ABET 6. A SAD CANDY CANE 7. BEYON- SLEIGH 8. BY RIDING AN ICICLE 9. SAINT NICKEL- LESS  
10. THE CHRISTMAS ALPHABET HAS NOEL



Happy 40th Anniversary  
my darling♡  
13/12/1980



D  
E  
S  
&  
S  
H  
Q  
N  
A  
C  
A  
N  
Q  
N  
S

1 Corinthians 13; 4-8  
Love is patient, love is  
kind. It does not  
envy, it does not  
boast, it is not proud.  
It is not rude, it is not  
self-seeking, it is not  
easily angered, it  
keeps no record of  
wrongs. Love does not  
delight in evil but  
rejoices with the  
truth.

Thank you for all of the wonderful children  
and grandchildren you have given me.



# **Laverton Events Calendar**

## **December 2020**

|                       |                                      |   |
|-----------------------|--------------------------------------|---|
| Wednesday 2 December  | Story & Rhyme Time                   | Laverton CRC-Children 0-5 years-10:30am |
| Thursday 3 December   | Women's Group                        | One Tree-Women-11:30am                  |
| Friday 4 December     | Community Christmas lights           | Augusta Street Rotunda—6:30pm           |
| Wednesday 9 December  | Better Beginnings Christmas Break-up | 10:00am—Laverton CRC                    |
| Wednesday 10 December | Seniors Christmas Break-up           | 10:00am—Laverton CRC                    |
| Friday 18 December    | School Christmas Holidays            | 18 December 2020—31 January 2021        |
| Wednesday 23 December | Shire & CRC Office closed            | Closed for Christmas Period             |



| MONDAY  | TUESDAY  | WEDNESDAY   | THURSDAY   | FRIDAY  | SATURDAY  | SUNDAY  |
|---|--|---|--|---|---|---|
|   | 1  | 2   | 3  | 4   | 5   | 6   |
|   |  |  <p>Story Time<br/>10am @ CRC</p>  |  |  <p>Christmas Lights Convoy<br/>6:30PM @ Augusta Street Rotunda</p> |   |   |
| 7   | 8  | 9   | 10   | 11  | 12  | 13  |
|   |  |  <p>Story &amp; Rhyme Time<br/><b>Christmas Break-up @ CRC 10am</b><br/><b>Santa is Coming!</b></p>  |  <p>SHIRE COUNCIL MEETING<br/>5:00PM</p>  <p>Seniors Morning Tea<br/>Christmas Breakup<br/>10am @ CRC</p>  |   |   |   |
| 14  | 15   | 16  | 17   | 18  | 19  | 20  |
|   |  |   |  |   |  <p>Church<br/>6:00pm</p>  |   |
| 21  | 22   | 23  | 24   | 25  | 26  | 27  |
|  <p>9: 00am-1: 00pm</p>  <p>8: 30am-4: 30pm</p>  <p>9: 00am-4: 00pm</p> |  <p>9: 00am-1: 00pm</p>  <p>8: 30am-4: 30pm</p>  <p>9: 00am-4: 00pm</p> |  <p>8: 30am-4: 30pm</p>  <p>9: 00am-1: 00pm</p>  <p>CLOSED</p> |  <p>KEEP CALM ITS CHRISTMAS EVE</p>  <p>CLOSED</p>  <p>CLOSED</p>  <p>CLOSED</p> |  <p>KEEP CALM AND HAVE A MERRY CHRISTMAS</p>                      |  <p>KEEP CALM HAPPY BOXING DAY</p>  <p>CLOSED</p>  <p>CLOSED</p>  <p>CLOSED</p> |  <p>CLOSED</p>  <p>CLOSED</p>  <p>CLOSED</p> |
| 28  | 29   | 30  | 31   |   |   |   |
|  <p>9: 00am-1: 00pm</p>  <p>CLOSED</p>  <p>CLOSED</p>                   |  <p>9: 00am-1: 00pm</p>  <p>CLOSED</p>  <p>CLOSED</p>                   |  <p>9: 00am-1: 00pm</p>  <p>CLOSED</p>  <p>CLOSED</p>          |  <p>9: 00am-1: 00pm</p> <p><b>NEW YEARS EVE!</b></p>  |   |   |   |